



# 2010 Retention/Completion Summary Tables

# Retention Trends

## Freshman to Sophomore Year

1983–2010

	Highest %	Lowest %	Current %
Two-year public	55.7 ('10)	51.3 ('04)	55.7
BA/BS public	70.0 ('04)	66.4 ('96, '05)	67.6
MA/MS public	71.6 ('06)	68.1 ('89)	67.3
PhD public	78.6 ('10)	72.9 ('08)	78.6
Two-year private	72.6 ('92)	55.5 ('08)	58.6
BA/BS private	74.0 ('89)	68.7 ('10)	68.7
MA/MS private	78.0 ('85)	71.4 ('10)	71.4
PhD private	85.0 ('85)	80.3 ('10)	80.3
All			66.7

# Completion Trends

1983–2010

Two-Year Colleges — graduation in 3 years or less

	Highest %	Lowest %	Current %
Public	38.8 ('89)	25.5 ('10)	28.0
Private	66.4 ('90)	50.2 ('08)	53.2
All	44.0 ('89)	28.3 ('10)	30.6

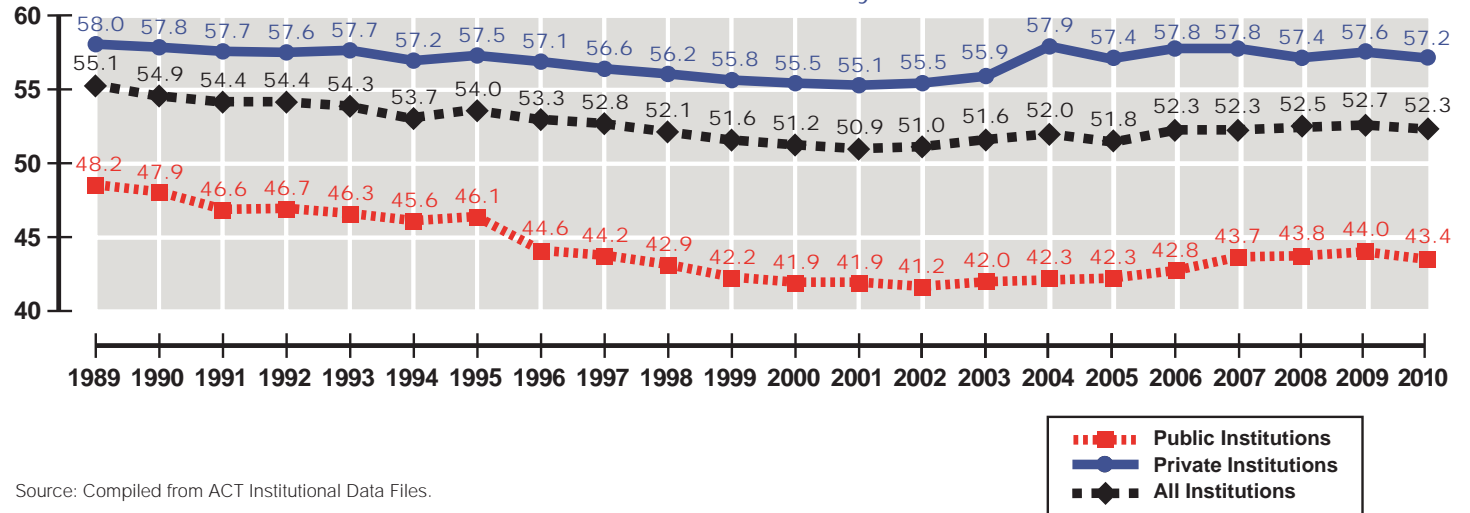
# Completion Trends

# 1983–2010

## Four-Year Public Colleges — graduation in 5 years or less

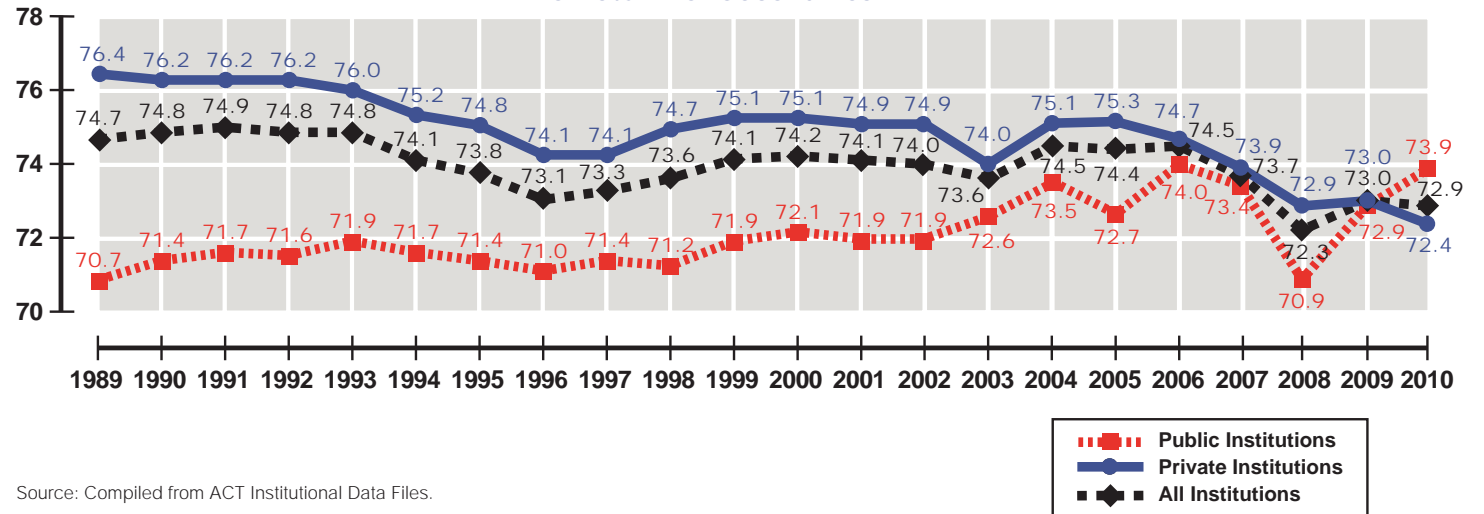
	Highest %	Lowest %	Current %
BA/BS public	52.8 ('86)	39.6 ('06, '10)	39.6
MA/MS public	46.7 ('86)	37.0 ('00)	39.0
PhD public	50.6 ('89, '90)	45.0 ('01)	47.8
BA/BS private	57.5 ('06)	53.3 ('01)	55.1
MA/MS private	58.4 ('88)	53.5 ('01)	54.4
PhD private	68.8 ('86)	63.1 ('05)	64.7

Percentage of Four-Year College Students Who Earn a Degree Within Five Years of Entry



Source: Compiled from ACT Institutional Data Files.

Percentage of First-Year Students at Four-Year Colleges Who Return for Second Year



Source: Compiled from ACT Institutional Data Files.

